

# Animals Including Humans

## Knowledge Organiser Y3/4

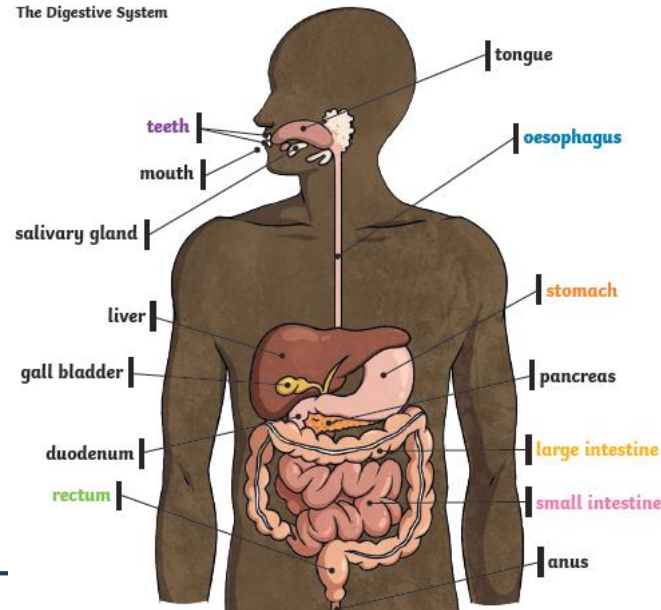
### Vocabulary

### Knowledge

### Sequence of Learning

<b>digest</b>	Break down food so it can be used by the body.
<b>oesophagus</b>	A muscular tube which moves food from the mouth to the stomach.
<b>stomach</b>	An organ in the digestive system where food is broken down with stomach acid and by being churned around.
<b>small intestine</b>	Part of the intestine where nutrients are absorbed into the body.
<b>large intestine</b>	Part of the intestine where water is absorbed from remaining waste food. Faeces are formed in the large intestine.
<b>rectum</b>	Part of the digestive system where faeces are stored before leaving the body through the anus.
<b>teeth</b>	Hard structures in the mouth that help with biting and chewing food.

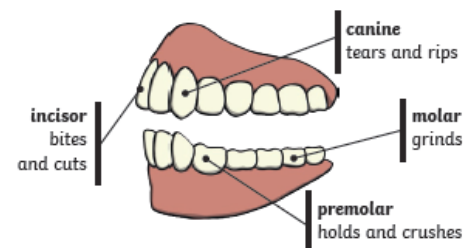
The Digestive System



1. Tooth Decay – how to keep teeth healthy, plan and set up an investigation into tooth decay.
2. Identify different types of teeth and their different functions – canine, molar, incisor, premolar.
3. To identify and describe the different parts of the digestive system and their functions.
4. To demonstrate and explain the digestion process.
5. To construct and interpret a variety of food chains identifying producers, prey and predators.

<b>herbivore</b>	An animal that eats plants.
<b>carnivore</b>	An animal that feeds on other animals.
<b>omnivore</b>	An animal that eats plants and animals.
<b>producer</b>	An organism, such as a plant, that produces its own food.
<b>predator</b>	An animal that hunts and eats other animals.
<b>prey</b>	An animal that gets hunted and eaten by another animal.

Human Teeth and Their Functions



Some people have wisdom teeth but they have no function now.

An Example of a Food Chain

The arrows in a food chain show the flow of energy.

