

Flag Success



2015 marks the 750th anniversary of the Montfort Parliament of 1265, where elected representatives of the shires and boroughs came together for the first time.

As part of a programme of celebrations during this important year for Parliament, the 2015 Flag Project invited our school to design a flag to represent Derbyshire Dales for a special online exhibition. We are really proud that Noel's design was chosen to represent the whole of Derbyshire.

We were chosen to represent our constituency which is The Derbyshire Dales.

This is what Noel (aged 7) had to say about the project.

"First of all, we had a look at some pictures of The Derbyshire Dales and we noticed the colours were mostly blues and greens with grey for the bridges and the rocks. This is why I chose these colours for my flag design. At first I did a design that I wasn't happy with so I made one that I thought was quite a lot better. Finally I made my best flag design which represented the viaducts and bridges in our area.

Mrs Porter said,

"Wow that looks brilliant!" The colours I used represent the hills and the sky."

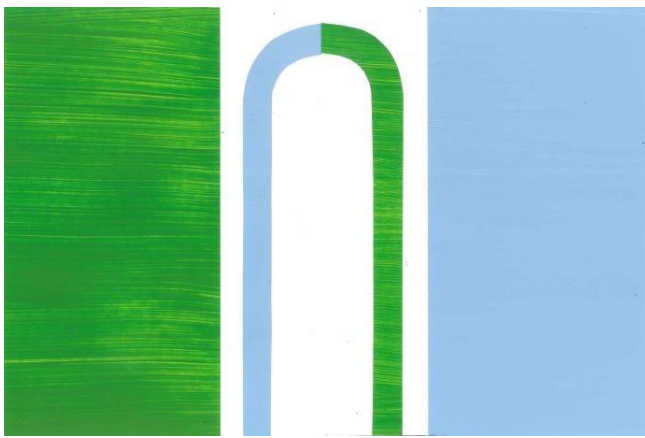
"My design was chosen out of all the other ones in school and it was sent off to parliament in London."

"Mrs Julian then had an email and was delighted because my flag had been chosen to represent our county of Derbyshire. (Only one constituency flag design was chosen for each county)."

"My design is going to be made in to a proper flag and after the General Election it will be flying at Westminster. If you are in London, please look out for it."

Noel's flag design has been selected as the Derbyshire Flag to be sewn to fly as part of this project in Parliament Square this Spring, as well as in Runnymede on the 15th June. An event which celebrates 800 years since the signing of the Magna Carta. The exhibition can be viewed on line at:

<http://flags.parliament.uk//galleries/flags>



Fishy Taste Test

As a Gold Food for Life school - Mrs Coppen and Mrs Hardy are always thinking about and learning about ways in which they can encourage children to have healthy meals. After a visit to the Food for Life Cooking Bus they decided on our Easter Activity Day to have a food tasting activity...not chocolate, but FISH!

When visiting the Cooking Bus, Mrs Coppen and Mrs Hardy cooked cod with different flavours added. For our activity we were treated to fresh cod, tuna, mackerel and salmon. Fish is a rich source of protein and very healthy for you, rich in omega 3 and vitamins B and D (good for maintaining healthy bones). Here are our two favourite recipes. We hope that you will give them a try and enjoy them as much as we did.

Baked Fish Parcels

Ingredients:

Mediterranean Cod

500g sustainable cod

4 cherry tomatoes
1 large garlic clove (peeled and sliced)
2 tbsp fresh basil (torn)
1 tbsp olive oil
1 tbsp water

Moroccan Mackerel

500g sustainable mackerel
2tbsp harissa paste
1 tsp cumin seeds
 $\frac{1}{4}$ red pepper (sliced)
1 bay leaf
200g canned chickpeas (drained and rinsed)
2 tbsp fresh parsley (chopped)
1tbsp olive oil
1 tbsp water

Method

1. Pre-heat the oven to 190° C or Gas mark 5
2. Place a sheet of tin foil on the work surface and put a fillet of fish in the centre of the sheet. Top the fish with the remaining ingredients from your chosen recipe.
3. Seal the fish in the tin foil securely and place on a baking tray
4. Bake in the oven for 8-10 minutes until the fish is cooked but hasn't dried out.



"I really liked the Mediterranean Cod. The fish was flaky and the flavours were really nice." - Emma (Y4)

"I really liked the Mackerel with the chick peas. It had loads of flavour." - Milly (Y6)

Crich Wesley Celebrations



2015 marks the 250th anniversary of the founding of the Methodist Chapel in Crich. In school, we have been learning about the lives of John and Charles Wesley and the beginnings of Methodism. We've also been working with, The Muddlealong Knitters to produce a wool reproduction of Crich Methodist Chapel. As we are going to press, the orchestra and choir are rehearsing well known hymns written by Charles Wesley, as well as rehearsing 'And Can It Be' - A play by Kate Baker especially written for the event. Perhaps you saw our celebrations.

As part of our studies we wanted to find out more about the Wesley family, we walked to the chapel in Crich followed by a visit to The Old Rectory in Epworth where John and Charles Wesley grew up.

Our Visit to the Wesleyan Chapel

A few weeks ago, we went to visit the Wesley Chapel in Crich. When we set off to the Wesleyan Chapel. I was right at the back of walkers, joined by Mr Quinlan, Harriet and Jack. Despite the fact I have lived in Crich all my life, I have never explored the Chapel. When we arrived we entered a spacious room filled with comfortable red chairs. It is almost the Chapel's 250th birthday. We were allowed to go and have a look upstairs.

The second floor was quite empty. It was filled with cobwebs and dust. We wandered around the chapel and soon we shouted "Thank you." to Heather (the lady who showed us around) and all swarmed out of the chapel and back to school.

What makes the Wesleyan chapel so special is its homely feel. It is light and airy and makes you feel comfortable and welcoming.

By Declan (Y6)

Old Rectory Visit

On Tuesday 24th March we visited Epworth Old Rectory. This was Crich Junior School's first summer visit. We went to see where John and Charles Wesley were brought up as children. This is because our local Methodist Church is celebrating their 250th Anniversary.

It took about one and a half hours to get there on the bus. We eventually arrived and we were excited to visit Epworth. After a while we all piled, like sardines, into a little room where we looked at a time line from when Jesus was born, through history to the present day.

Next, we split into groups and set off to explore. We strolled to St Andrew's Church which is steeped in history and we were all delighted to be given a chance to ring the church bells.

Waiting patiently at the Methodist Chapel (that was positioned in the centre of the village) was the minister. He eagerly greeted us, and was dressed as John Wesley would have been all those years ago. He was full of enthusiasm and had boundless energy which made each fact sound very exciting.

After lunch, following a delightful walk back to The Old rectory, we met a very pleasant and likeable lady (who we later found out was pretending to be Susanna Wesley), greeted us at the school room door. We dressed up in 1700's costumes and did some school work. Before long we were writing on slates and using quill pens, and despite never doing it before, it was really easy.

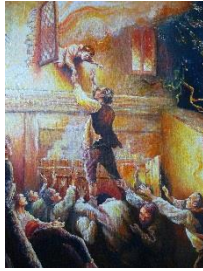
Finally it was time to explore the house. I felt as if I had gone back in time. It was filled with old, fragile china and furniture which was extraordinary and exceptional.

IT WAS FANTASTIC!

I really enjoyed my day out at Epworth. I saw some amazing objects and I hope one day that we can go back.


Cain (Y6)






In year 5, we have been designing promotional leaflets for Epworth and The Old Rectory. Here are just a couple, but we will be sending copies of all the leaflets down to the Chapel for you to have a look at. Perhaps you will be persuaded to visit Epworth yourself.

EPWORTH



What was the Wesley's house like?

The old Rectory Epworth shows you what the early lives of John & Charles Wesley were like. It was the home where the rector of Epworth, Samuel Wesley, and his wife Susanna brought up their children. As you tour the Old Rectory under the guidance of the enthusiastic staff you will see how people lived in the early 1700s. Come through the front door into the impressive entrance hall. Visit Samuel's study and Susanna's kitchen, enjoy the space of the family drawing room, see the family bedrooms and the attic. You can even have a lesson with Mrs Wesley in her Kitchen classroom.




It is a gorgeous, gigantic building and has many interesting rooms. It is also where the Wesley family lived for a long time.

Epworth Old Rectory
Home of the Wesleys


"It is a great day out and there is lots to do, when it has good weather the garden look beautiful."
- Matthew. Crich.


CHARLES WESLEY



Directions:
Leave the M50 at junction 2 and follow signs to Gainsborough. Epworth is 3 miles south of the M50. Turn left in to the village and proceed straight on through the village. The Old Rectory is on a hill at the far end of the village. Follow the large brick wall as it curves to the right and then to the left.

JOHN WESLEY







John and Charles were the brilliant founders of Methodism, which is still followed to this day. Methodism is an extremely popular a form of Christianity.



FIRE!
In 1708 there was a furious fire that burnt the huge John Wesley house. Poor John was stuck but he just managed to get out by falling in someone's strong arms.

Directions: Leave the big M50 at junction 2 and follow signs to Gainsborough. Epworth is a whopping 3 miles south of the M50. Turn left in to the village and proceed straight on through the village. The Old Rectory is on a hill at the far end of the village. Follow the large brick wall as it curves to the right and then to the left.

Epworth is the brilliant birth place of the extremely famous John and Charles Wesley. Here you can have a very strict lesson from Mrs Wesley, visit cool churches and explore the Wesley house .

Wesleyan Facts

In Mr Orridge's class the year 3 and 4 pupils have been finding out interesting facts about John and Charles Wesley. Here's are 10 facts that they discovered:

1. John Wesley was the preacher whilst Charles Wesley, his younger brother, was the hymn writer.
2. John and Charles Wesley learnt both Greek and Latin in their lessons (they were taught at home by their mum - who was called Suzanna).
3. John Wesley was christened at St Andrew's Church in Epworth.
4. John preached in fields, marketplaces and near mines. He also preached at the Wesley Chapel in Crich.

5. John Wesley was only 5'2" tall.
6. John rode everywhere on horseback.
7. John didn't wear a wig. He didn't want to pay the taxes for using arsenic to powder a wig, so he grew his hair long instead. Charles, did pay the taxes, and wore a wig.
8. John Wesley travelled over 4,000 miles and preached over 40,000 sermons.
9. Charles Wesley wrote over 6,000 hymns during his life time including Love Divine and Hark the Herald Angels Sing.
10. Today there are more than 30 million Methodists in the world.

Perfect Pioneers

For our most recent homework project we asked our pupils to research an inspirational pioneer of their choice. The projects have just started arriving at school and we are really excited to see what the children have learnt.

Our very first 'Show and Tell' was from Olly (Y3)

Olly talked to the whole school about his chosen pioneer, Alexander Fleming. He told us that Fleming discovered Penicillin, was knighted in 1944 and won the Nobel Prize for medicine in 1945. His discovery has saved millions of lives. Olly also did an experiment that demonstrated how germs can grow. He took samples from his Nan's remote control, clean hands, dirty hands, the air...and his nose! Here are his results.

My Experiment

To recreate Fleming's accidental discovery of penicillin, I have decided to grow my own bacteria. To make it a bit more exciting, I have put a bit of penicillin in to each petri dish. I hope this works and that the penicillin stops the bacteria growing around it.

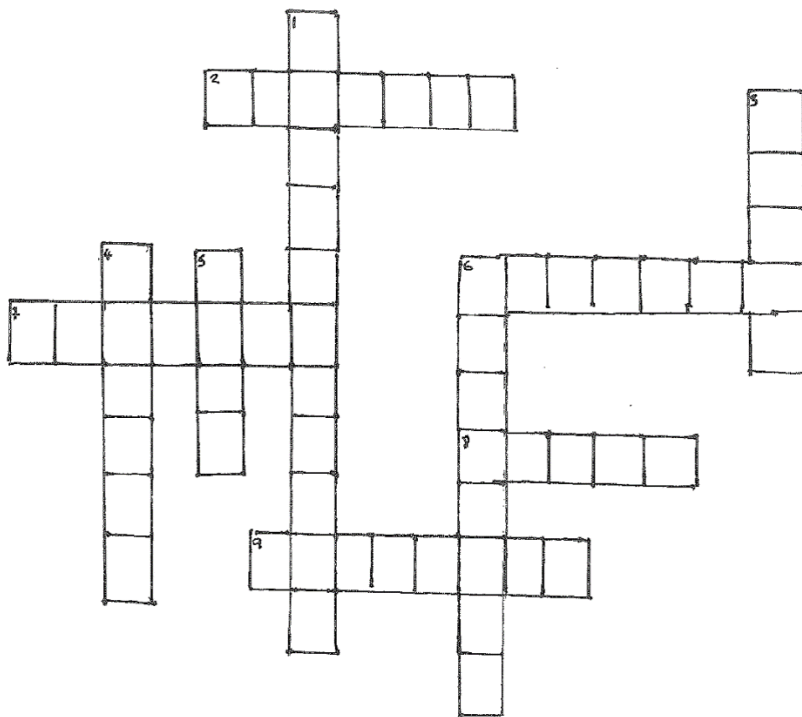
My Results

The most bacteria was grown from the remote control. I think that this is because lots of dirty hands have touched it. There are fewer bacteria in the 'clean hand' petri dish, which proves that I wash my hands properly! There is some yellow bacterial growing inside the 'nose' dish. It is staphylococcus which causes impetigo.

So remember to clean your remote control!



Emma (Y4) chose to study Florence Nightingale for her Pioneer Project. Here is her crossword for you to try and complete.



Across

- 2. Florence worked through this war.
- 7. Florence worked in this military hospital.
- 8. What were the conditions like in hospitals?
- 9. The first name of 'The lady with the lamp'.

Down

- 1. Surname of 'The lady with the lamp'.
- 3. This was Florence's job.
- 4. The country where Florence worked during the war.
- 5. Florence carried on of these.
- 6. Florence helped these if they were injured.

"I thought that Emma's crossword was really good - even though it was quite hard." - Isla (Y4)

"I enjoyed having a go at Emma's Florence Nightingale crossword." - Erin (Y4)

"I have learnt some facts about Florence Nightingale which I didn't know before." -Tilda (Y4)

Answers

1. Nightingale
2. Crimean
3. Nurse
4. Russia
5. Lamp
6. Soldiers
7. Scutari
8. Dirty
9. Florence

We are looking forward to looking at all of the children's Pioneer Projects.

Look out for them on our website. www.crich-jun.derbyshire.sch.uk