

Hundertwasser

Hundertwasser was an Austrian artist born 1928 – but spent most of his life in New Zealand

He died in 2000.

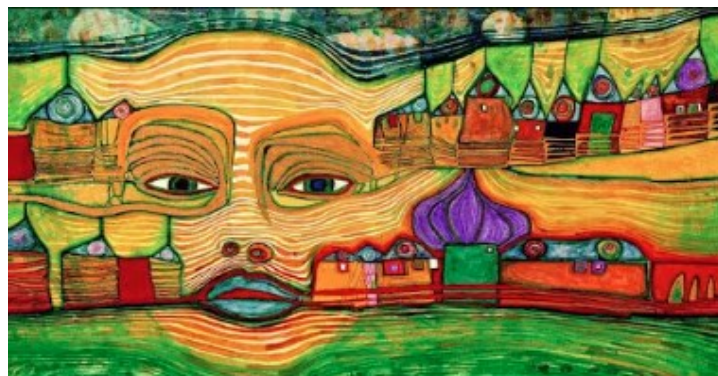
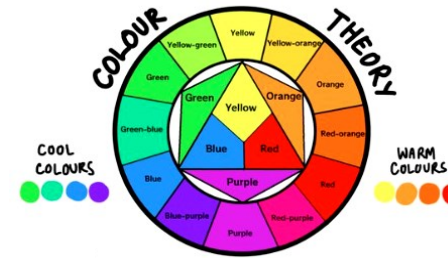
Beside his work in the field of art and architecture, he was also well-known as an environmentalist and eco-activist.

Notable for his building designs – Hundertwasser didn't like symmetry, straight lines – he liked chaos and different sized windows and swirling compositions. Some say his work was childish, but he said that but he believed children's creativity was the 'truest' form, because it was not influenced by experience.



Key Vocabulary	
Primary colours	Yellow, red and blue. These colours cannot be mixed from other colours.
Secondary colours	Green, orange and purple. These colours are mixed by combining two primary colours.
Tint	When a colour is made lighter by adding white,
Shade	When a colour is made darker by adding black,
Organic shape	A shape we cannot give a name to, unlike a geometric shape. These shapes are often found in the natural world.
Elements	Elements of art are stylistic features that are included within an art piece to help the artist communicate. The seven most common elements include line, shape, texture, form, space, color and value,
Architecture	The design of buildings.

Hundertwasser Knowledge Organiser LKS2



Sequenced Learning	
1 (all)	To identify the key elements within Hundertwasser's work.
2 (all)	To use tints and shades in painting.
3 (all)	To create a composition using key elements and what we have learnt about colour theory.
4 (UKS2)	To include line elements such as hatching and cross hatching
5 (UKS2)	Evaluate own work and that of others.